



13 Aintree Road
Little Lever, Bolton, BL3 1EZ

Offers In Region Of
£180,000

Property Features

- 2 Bedroom Semi Detached True Bungalow
 - Popular Location
 - Two double bedrooms
 - Single detached garage to rear
 - Off road parking
 - Well maintained gardens
 - Potential to extend (Subject to planning permission)
 - Leasehold property
 - EPC Rating D
-



STEP INSIDE 13 AINTREE ROAD

The accommodation briefly comprising; Entrance vestibule leading to a good sized living room. This bright inviting space is finished in neutral décor and flooring and comes complete with a wall hung electric fire.

The separate, modern kitchen is finished in a stylish white high gloss with a contrasting dark worktop and back splash combination. Integrated appliances include oven, hob, fridge freezer and a washing machine. Additionally there is access out to the side of the property.

There are two double bedrooms which again are finished in neutral décor and flooring and both overlook the rear garden. The modern bathroom has a contemporary three piece suite comprising of w/c, wash basin and a freestanding shower cubicle.

Externally there are beautifully maintained gardens to the front and rear of the property as well as a long driveway and separate secure garage.

LOCATION

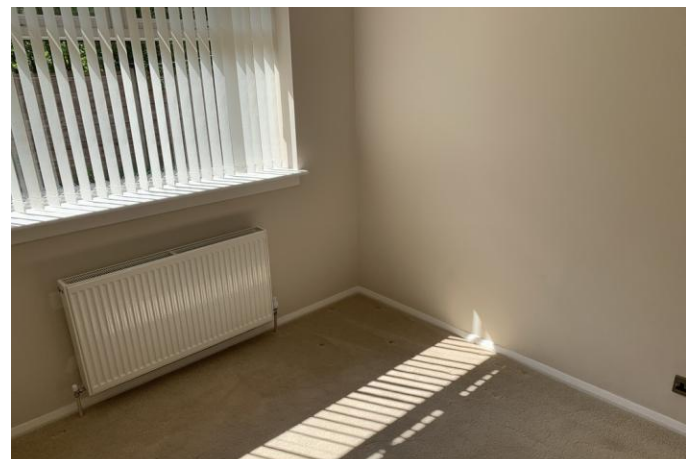
Little Lever is the smallest of the Borough's local town centres but certainly has a larger than life community. Little Lever's strength is that it has a centre which caters for the community it serves. The facilities within the Town Centre briefly include, a library which also houses the Access Bolton Service, Barbers, Cafes, Beauty Salons, Post Office, Chemist, Doctors Surgery, Dentist plus much more. Tesco Supermarket opened its doors approx. 4 years ago which became a great addition



to the already thriving community. Little Lever offers the best of both worlds, with its bustling shopping area to its tranquil rural walks which are easily accessible. There is local schooling at both Primary and Secondary level and transport links readily available to take you into, Bolton, Bury, Radcliffe and Manchester.

PROPERTY PARTICULARS DISCLAIMER

Property particulars as supplied by Hannon Holmes Estate Agents are set out as a general outline in accordance with the Property Misdescriptions Act (1991) only for the guidance of intending purchasers or lessees, and do not constitute any part of an offer or contract. Details are given without any responsibility, and any intending purchasers, lessees or third parties should not rely on them as statements or representations of fact, but must satisfy themselves by inspection or otherwise as to the correctness of each of them. We have not carried out a structural survey and the services, appliances and specific fittings have not been tested. All photographs, measurements, floor plans and distances referred to are given as a guide only and should not be relied upon for the purchase of carpets or any other fixtures or fittings. Gardens, roof terraces, balconies and communal gardens as well as tenure and lease details cannot have their accuracy guaranteed for intending purchasers. Lease details, service ground rent (where applicable) are given as a guide only and should be checked and confirmed by your solicitor prior to exchange of contracts. No person in the employment of Hannon Holmes Ltd has any authority to make any representation or warranty whatever in relation to this property. Purchase prices, rents or other prices quoted are correct at the date of publication and, unless otherwise stated, exclusive of VAT. TENURE : The type of tenure has been given to us by the seller. This has not been verified. The Agent has not checked the legal documents to verify the tenure status of the property. The buyer is advised to obtain verification from their Solicitor or Surveyor. For full Property Particulars Disclaimer please visit <http://hannonholmes.co.uk/property-particulars-disclaimer>.





79 - 81 Market
Street
Little Lever
Bolton
Lancashire

www.hannonholmes.co.uk
info@hannonholmes.co.uk
01204 793113

Agents Note: Whilst every care has been taken to prepare these particulars, they are for guidance purposes only. All measurements are approximate are for general guidance purposes only and whilst every care has been taken to ensure their accuracy, they should not be relied upon and potential buyers/tenants are advised to recheck the measurements